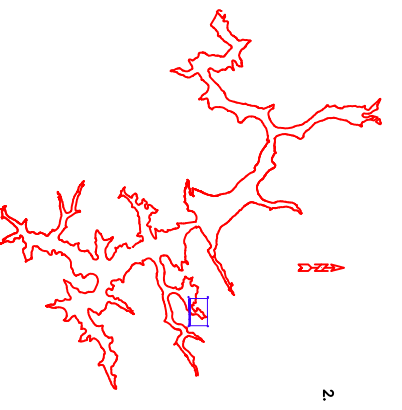


LEGEND

- CONCRETE MONUMENT SET
- MONUMENT FOUND
- 2482 CONTOUR LINE
- 2482 CONTOUR LINE
- 25 FT. SAFETY LINE
- BUDDOWN AREAS
- LAKE RESIDENTIAL
- TOWN CENTER
- LAKE RESIDENTIAL
- MONUMENT TO BE SET
- CALCULATED MONUMENT LOCATIONS THAT CANNOT BE SET
- 1" REBAR WITH ALUMINUM CAP SET
- 2" BRASS DISC SET

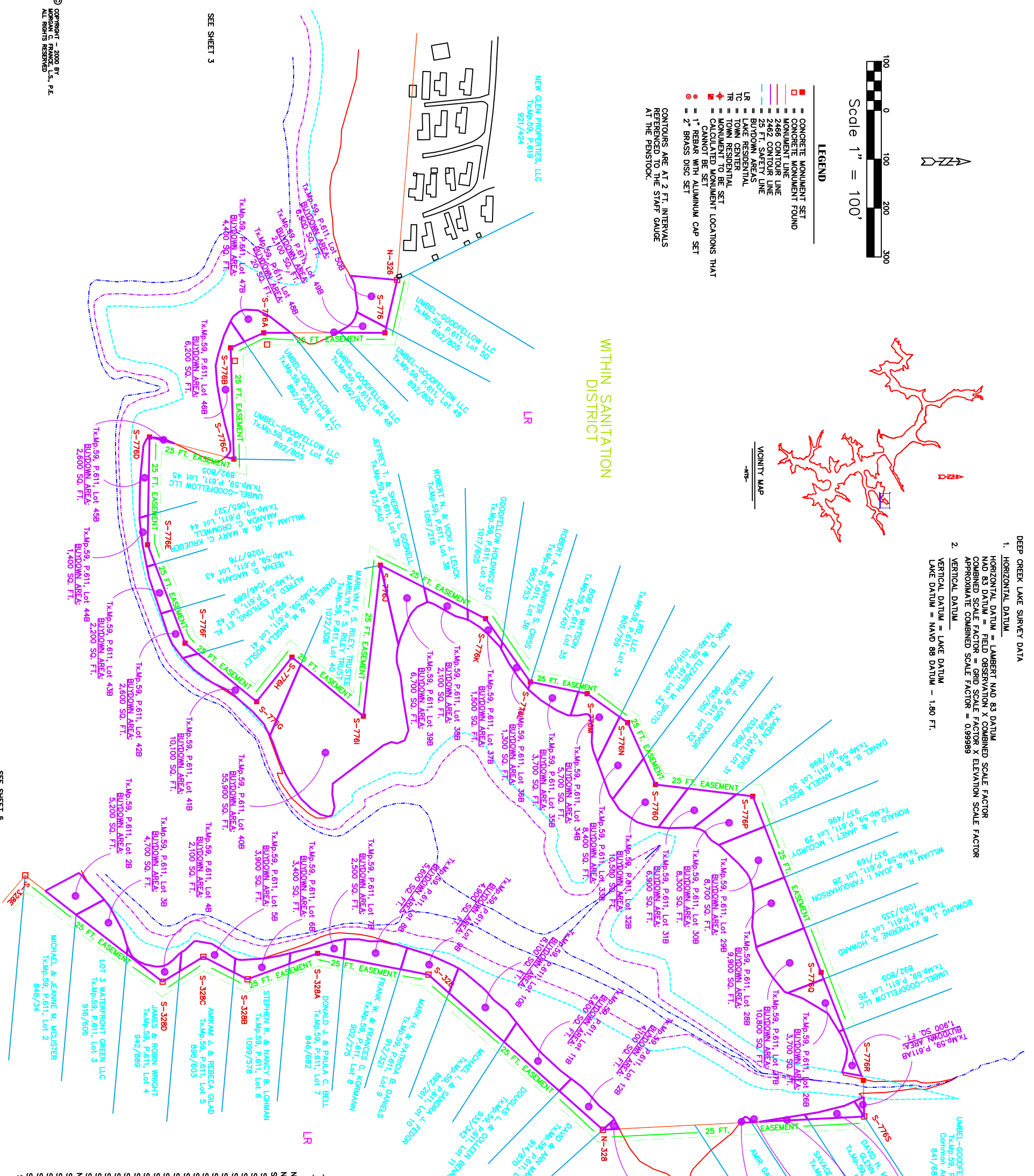
CONTOURS ARE AT 2 FT. INTERVALS REFERENCED TO THE STAFF GAUGE AT THE PENSTOCK.

VICINITY MAP



WITHIN SANITATION DISTRICT

WITHIN SANITATION DISTRICT



CONC. MON.	BEARING	DISTANCE	CONC. MON. NO.	BEARING	DISTANCE
N325-N326	S 85°25' E	1164.23'	S-328B	S 37°41' W	388.26'
N326-S776	S 76°58' E	110.99'	S-328C	S 33°40' E	97.40 FT.
S776-S778A	S 20°25' E	247.96'	S-328D	S 35°38' W	353.58 FT.
S778A-S778B	S 24°25' E	74.27'	S-328E	S 51°38' E	123.83 FT.
S778B-S778C	N 88°21' E	227.62'			
S778C-S778D	S 14°40' W	178.35'			
S778D-S778E	S 88°59' E	220.41'			
S778E-S778F	N 69°18' E	215.51'			
S778F-S778G	N 39°16' E	188.12'			
S778G-S778H	N 51°33' W	116.15'			
S778H-S778I	N 39°34' W	189.47'			
S778I-S778J	N 83°34' W	310.80'			
S778J-S778K	N 26°55' E	241.29'			
S778K-S778L	N 54°44' E	158.51'			
S778L-S778M	N 11°43' E	118.71'			
S778M-S778N	N 35°35' E	101.82'			
S778N-S778O	N 65°43' E	138.83'			
S778O-S778P	N 06°53' E	200.28'			
S778P-S778Q	N 68°41' E	386.54'			
S778Q-S778R	N 68°37' E	237.02'			
S778R-S778S	N 74°03' E	74.03'			
S778S-S778T	N 02°54' E	535.18'			
S778T-S778U	S 41°38' W	477.46'			
S778U-S778V	S 10°54' W	230.88'			
S778V-S778W	S 20°18' W	153.06'			
S778W-S778X	S 26°57' W	101.36'			
S778X-S778Y	S 31°28' E	97.45'			
S778Y-S778Z	S 37°41' W	388.26'			
S778Z-S778A	S 49°49' E	129.90'			

COORDINATE SCHEDULE			COORDINATE SCHEDULE		
Mon.	North	East	Mon.	North	East
N325	678103.66	668689.22	S776F	677869.89	669612.36
S328C	677707.07	670253.58	S776G	677816.31	669732.05
S328B	678167.68	670290.48	S776H	677868.53	669641.09
N328	678524.56	670607.68	S776I	678034.60	669761.77
S328A	679059.05	670590.64	S776J	678084.41	669452.33
S778A	677940.97	670246.81	S776K	678284.56	669562.15
S328D	677797.42	670299.92	S776L	678376.09	669691.57
S328E	677623.87	670304.90	S776M	678492.33	669715.67
S778B	677607.63	668977.35	S776N	678575.14	669774.91
S778C	677679.61	669235.74	S776O	678630.89	669825.89
S778D	677759.07	669190.59	S776P	678657.33	670056.83
S778E	677593.17	669410.97	S776Q	677830.67	669877.51
			S776R	677630.04	669008.21

SURVEY CALLS			PENELEC CALLS		
CONC. MON.	BEARING	DISTANCE	CONC. MON. NO.	BEARING	DISTANCE
N325-N326	S 85°25' E	1164.23'	S-328B	S 37°41' W	388.26'
S776-S778A	S 20°25' E	247.96'	S-328C	S 33°40' E	97.40 FT.
S778A-S778B	S 24°25' E	74.27'	S-328D	S 35°38' W	353.58 FT.
S778B-S778C	N 88°21' E	227.62'	S-328E	S 51°38' E	123.83 FT.
S778C-S778D	S 14°40' W	178.35'			
S778D-S778E	S 88°59' E	220.41'			
S778E-S778F	N 69°18' E	215.51'			
S778F-S778G	N 39°16' E	188.12'			
S778G-S778H	N 51°33' W	116.15'			
S778H-S778I	N 39°34' W	189.47'			
S778I-S778J	N 83°34' W	310.80'			
S778J-S778K	N 26°55' E	241.29'			
S778K-S778L	N 54°44' E	158.51'			
S778L-S778M	N 11°43' E	118.71'			
S778M-S778N	N 35°35' E	101.82'			
S778N-S778O	N 65°43' E	138.83'			
S778O-S778P	N 06°53' E	200.28'			
S778P-S778Q	N 68°41' E	386.54'			
S778Q-S778R	N 68°37' E	237.02'			
S778R-S778S	N 74°03' E	74.03'			
S778S-S778T	N 02°54' E	535.18'			
S778T-S778U	S 41°38' W	477.46'			
S778U-S778V	S 10°54' W	230.88'			
S778V-S778W	S 20°18' W	153.06'			
S778W-S778X	S 26°57' W	101.36'			
S778X-S778Y	S 31°28' E	97.45'			
S778Y-S778Z	S 37°41' W	388.26'			
S778Z-S778A	S 49°49' E	129.90'			

DRAWN BY: SUSAN N. EVANS PERAUDO		APPROVED BY: MORGAN C. FRANCE	
and MARGARET A. JORDAN			
DATE: HARVEY	PLOT DATE: 6/28/00	DATE: 3/31/04	
PROJECT: DEEP CREEK PROJECT BUY DOWN SURVEY			
SHEET NAME: HARVEY'S PENINSULA			
DRAWING NO: 4V			
PREPARED FOR: MORGAN C. FRANCE, L.S., P.E.		DEPT. OF GEN. SERVICES - REAL ESTATE	
10 North Third Street		300 West Preston Street, Room 601	
Oxford, Maryland 21550		Baltimore, Maryland 21201	
(301) 334-2305			

© COPYRIGHT - 2000 BY MORGAN C. FRANCE, L.S., P.E. ALL RIGHTS RESERVED

SEE SHEET 3

SEE SHEET 5